

10	3	401	4	404	5	407	6	410	7	413	8	416	9	419	10	422	11	425	12	428	13	431	14	434	15	437	16	440
20	7	451	8	454	9	457	10	460	11	463	12	466	13	469	14	472	15	475	16	478	17	481	18	484	19	487	20	490
30	12	501	13	504	14	507	15	510	16	513	17	516	18	519	19	522	20	525	21	528	22	531	23	534	24	537	25	540
40	17	561	18	564	19	567	20	570	21	573	22	576	23	579	24	582	25	585	26	588	27	591	28	594	29	597	30	600
50	22	621	23	624	24	627	25	630	26	633	27	636	28	639	29	642	30	645	31	648	32	651	33	654	34	657	35	660
60	27	661	28	664	29	667	30	670	31	673	32	676	33	679	34	682	35	685	36	688	37	691	38	694	39	697	40	700
70	32	711	33	714	34	717	35	720	36	723	37	726	38	729	39	732	40	735	41	738	42	741	43	744	44	747	45	750
80	37	761	38	764	39	767	40	770	41	773	42	776	43	779	44	782	45	785	46	788	47	791	48	794	49	797	50	800
90	42	811	43	814	44	817	45	820	46	823	47	826	48	829	49	832	50	835	51	838	52	841	53	844	54	847	55	850
100	47	861	48	864	49	867	50	870	51	873	52	876	53	879	54	882	55	885	56	888	57	891	58	894	59	897	60	900

Helota zmian
Pole
Opis zmiany
Data zmiany

A

B

C

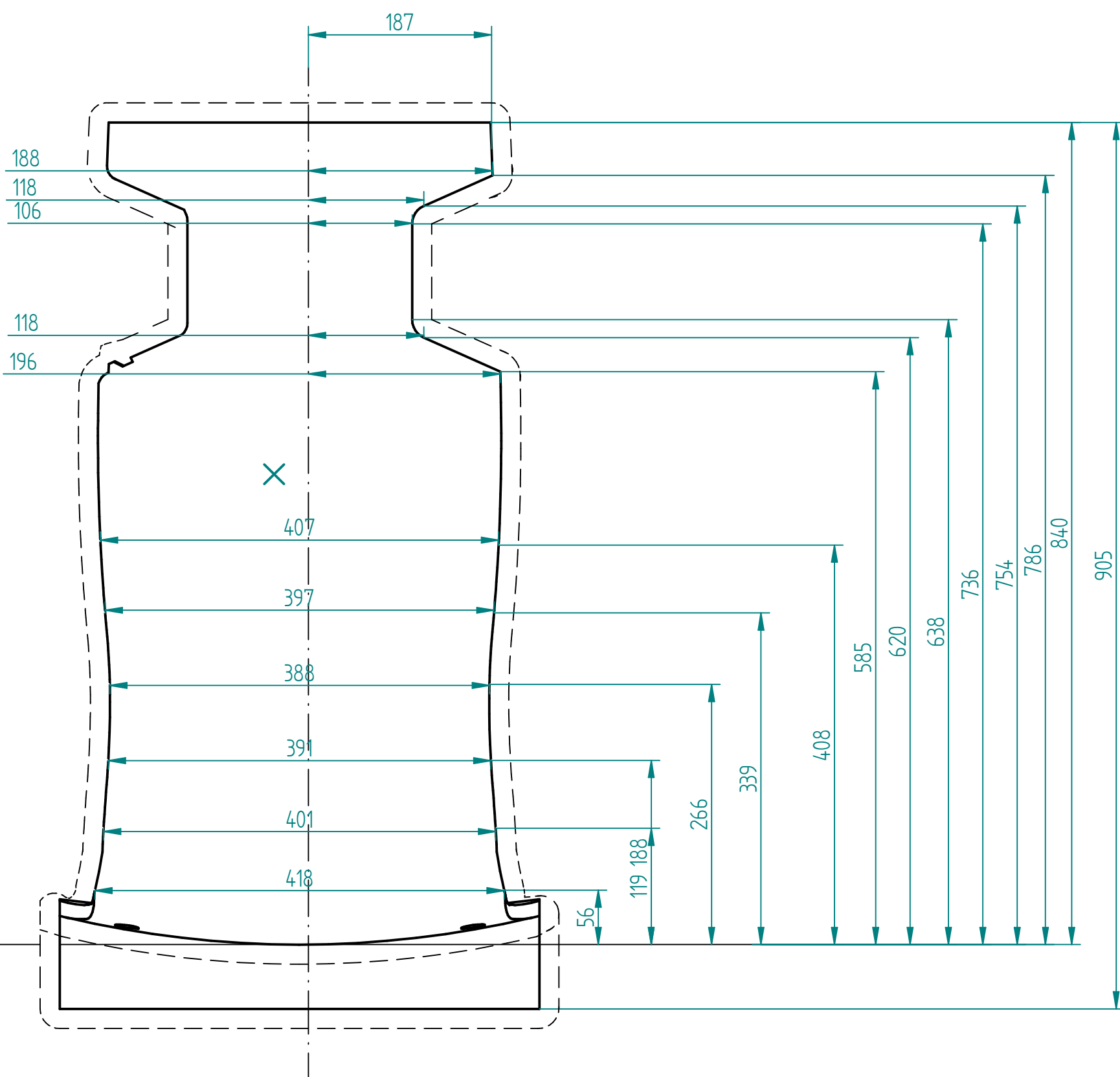
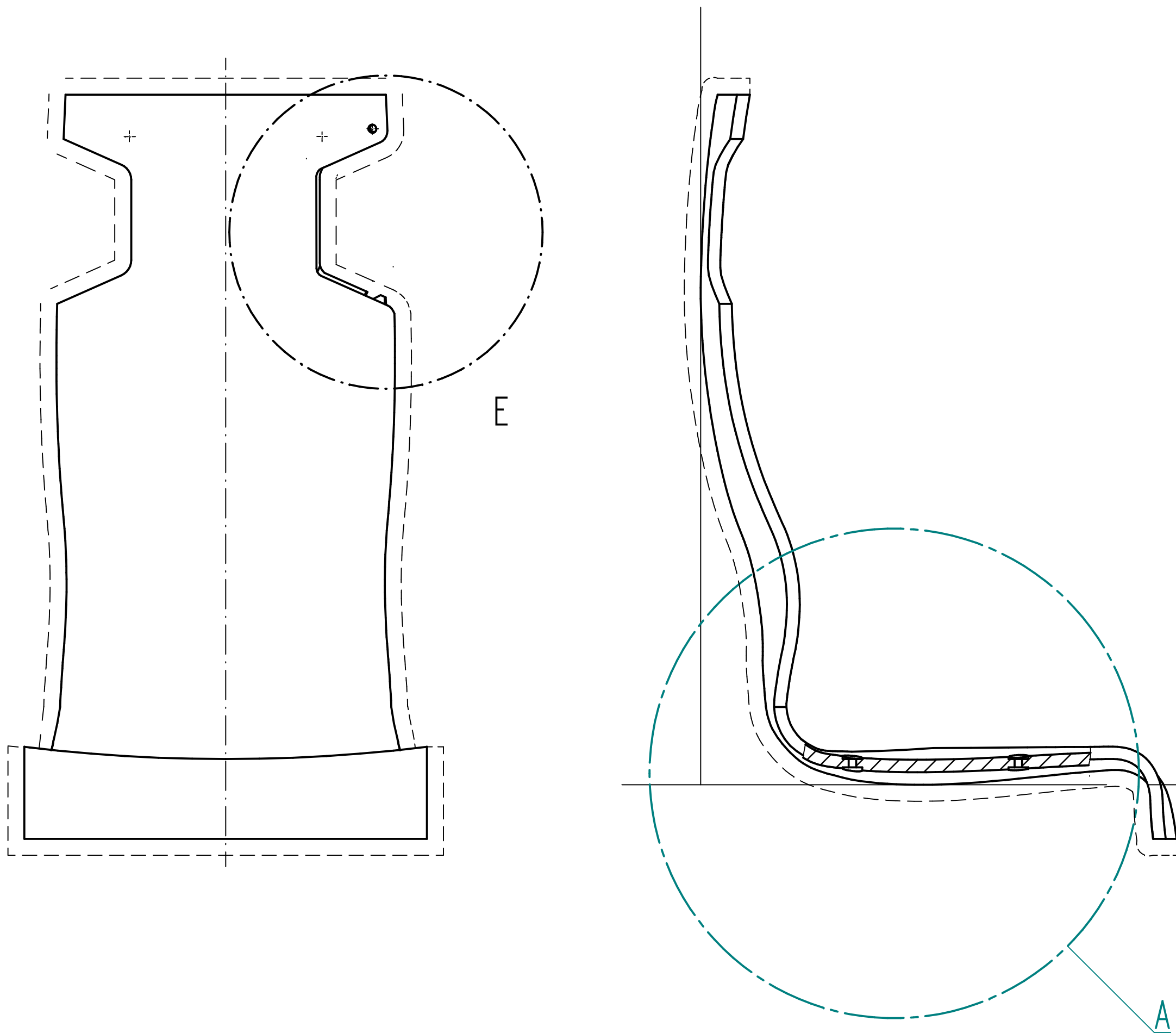
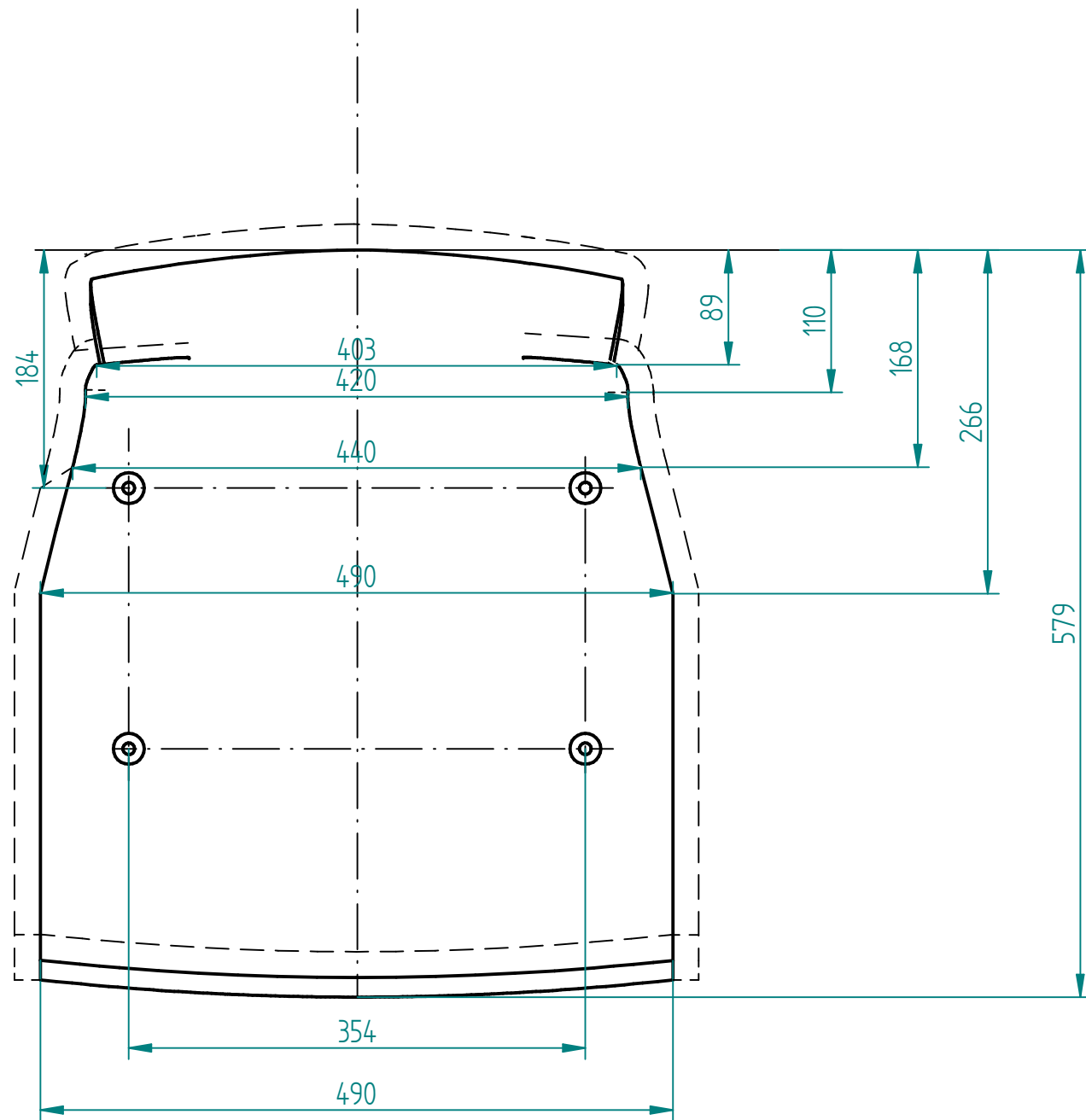
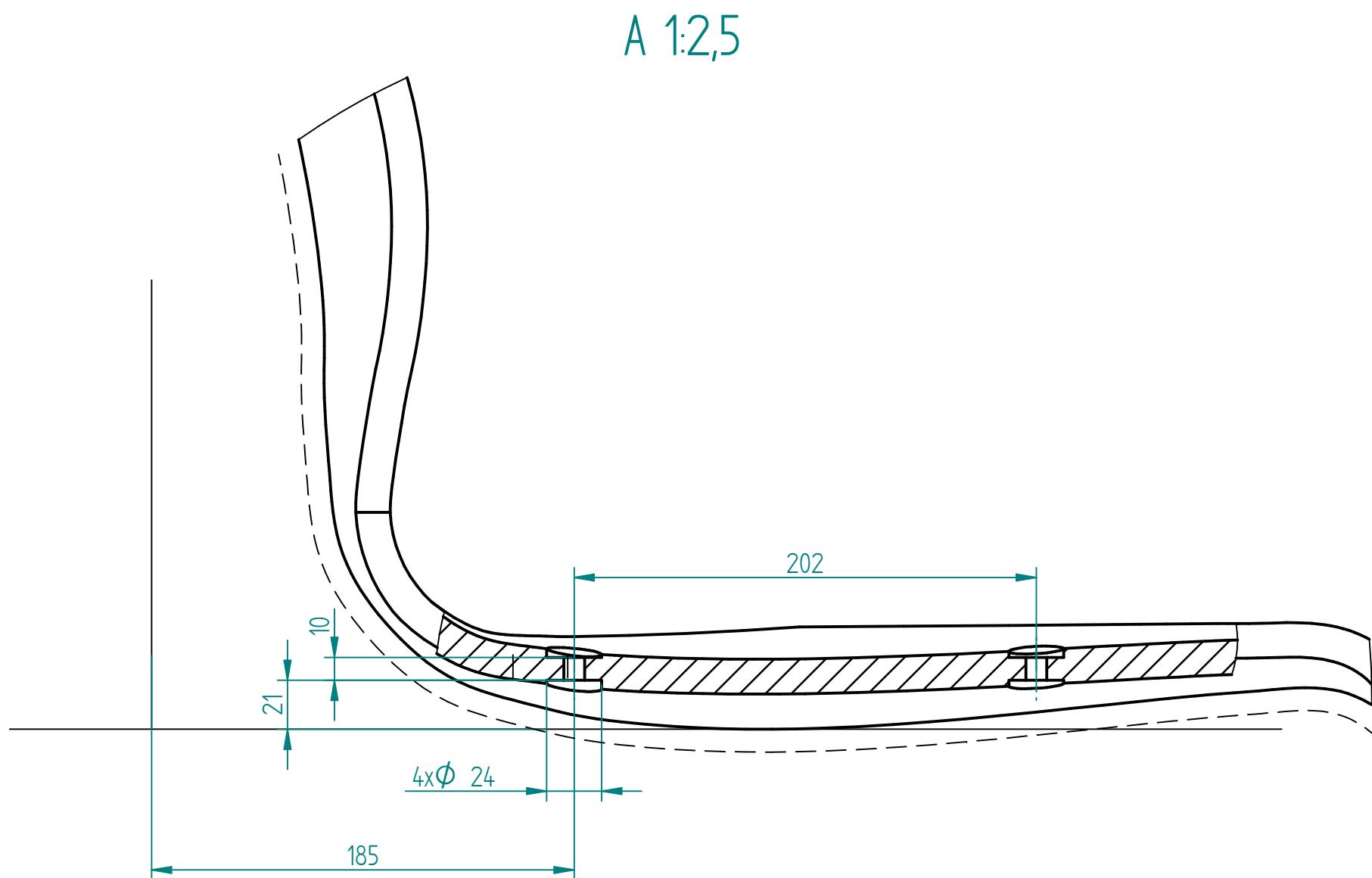
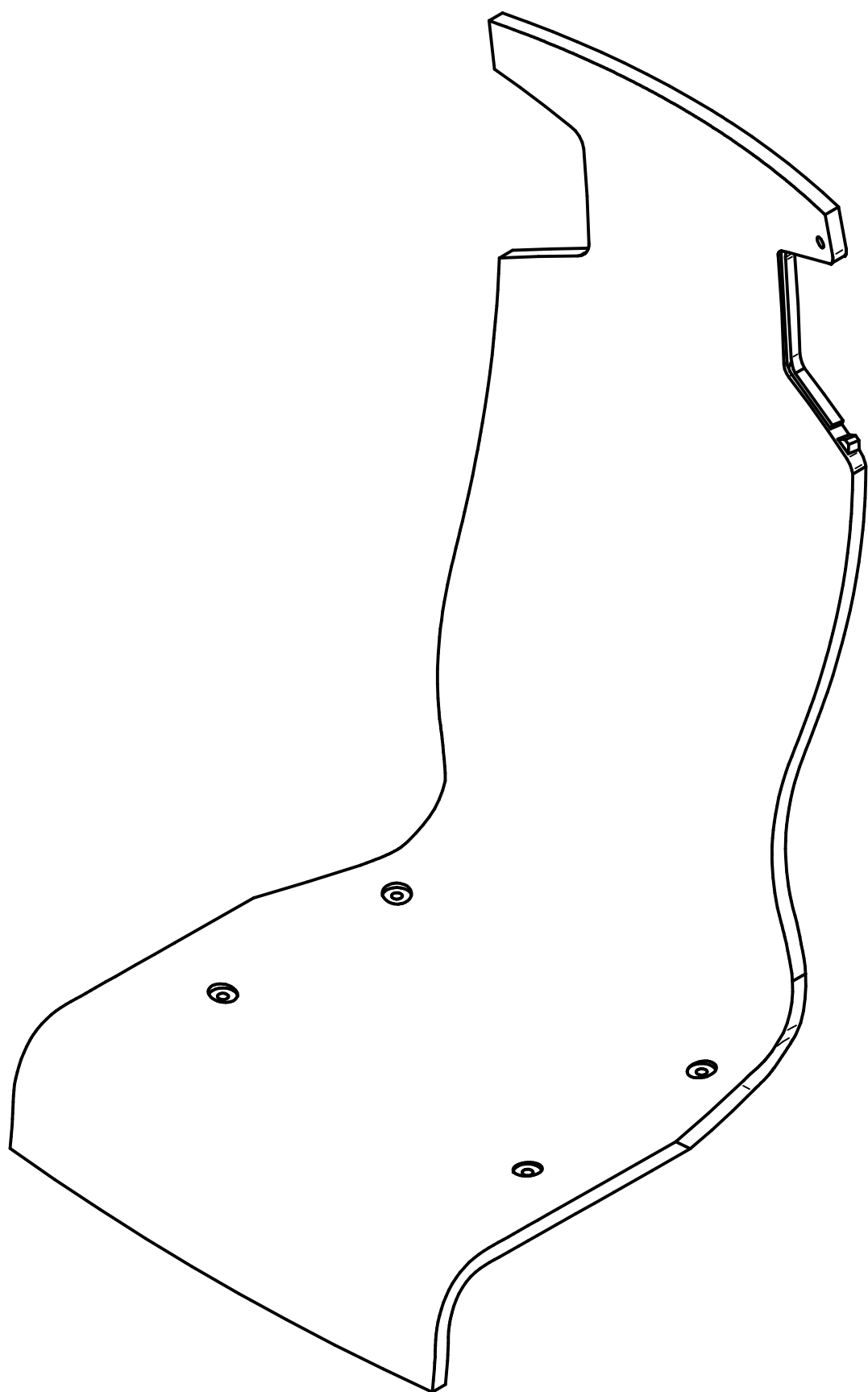
D

G

H

I

J



Uwagi:

- Malować zgodnie ze specyfikacją klienta
- Linia - - określa powierzchnie widoczne
- Symbol X oznacza miejsce pomiaru grubości powłoki lakierniczej

Norm: ...	Material size: ...	Norm: ...	Material: ...	Notes: ...
Tolerances: ...	Approved by: ...	Norm: ...	Material: ...	Notes: ...
General: ...	Welding const: ...	Approved by: ...	Material: ...	Notes: ...
Tolerances: ...	Tolerances: ...	Approved by: ...	Material: ...	Notes: ...
ISO 2768-mK	EN ISO	Approved by: ...	Material: ...	Notes: ...
Projecting: ...	Thermal: ...	Approved by: ...	Material: ...	Notes: ...
cutting: ...	cutting: ...	Approved by: ...	Material: ...	Notes: ...
Scale: ...	Scale: ...	Approved by: ...	Material: ...	Notes: ...
Drawing name: ...	Drawing name: ...	Approved by: ...	Material: ...	Notes: ...
Drawing no.: ...	Drawing no.: ...	Approved by: ...	Material: ...	Notes: ...
Version: ...	Version: ...	Approved by: ...	Material: ...	Notes: ...